

TM



SAMPLING VALVE

DESCRIPTION

- Valve for fluid sampling.
- Two-piece cast body for ease of installation.
- Various sealing materials available.
- The seat design prevents any buildup of waste.
- Fitted with a coupling to be welded to the pipe that is attached to the valve body.
- Simple design at the valve output.

GENERAL APPLICATIONS

This sampling valve is suitable for fluids with consistencies of suspended solids between 0 and 8%. It is used to obtain representative samples of fluids in pipes or tanks requiring calibration of continuous measurement transmitters.

Designed for applications such as:

- Paper industry
- Chemical plants
- Food industry
- Wastewater treatment plants

SIZES

- DN25 & DN40

WORKING PRESSURE (ΔP)

All sizes	10 bar
-----------	--------

OPTIONAL ACCESSORIES

- Flushing holes in the body

ACTUATORS

- Lever
- Pneumatic

APPLICATION OF EUROPEAN DIRECTIVES

See document of European Directives applicable to **CMO Valves**.

** For category and zone information, contact technical-commercial department at **CMO Valves**.*



Fig. 1

COMPONENTS LIST

STANDARD COMPONENTS LIST

POS	COMPONENT	MATERIAL
1	BODY	CF8M
2	O-RING	NITRILE
3	FLANGE	AISI316
4	O-RING	NITRILE
5	OBTURATOR	AISI316
6	LEVER	AISI316
7	STOP SLEEVE	AISI316
8	SPRING	AISI302
9	GUIDE SLEEVE	PTFE
10	O-RING	NITRILE
11	PIN	AISI316

Table 1

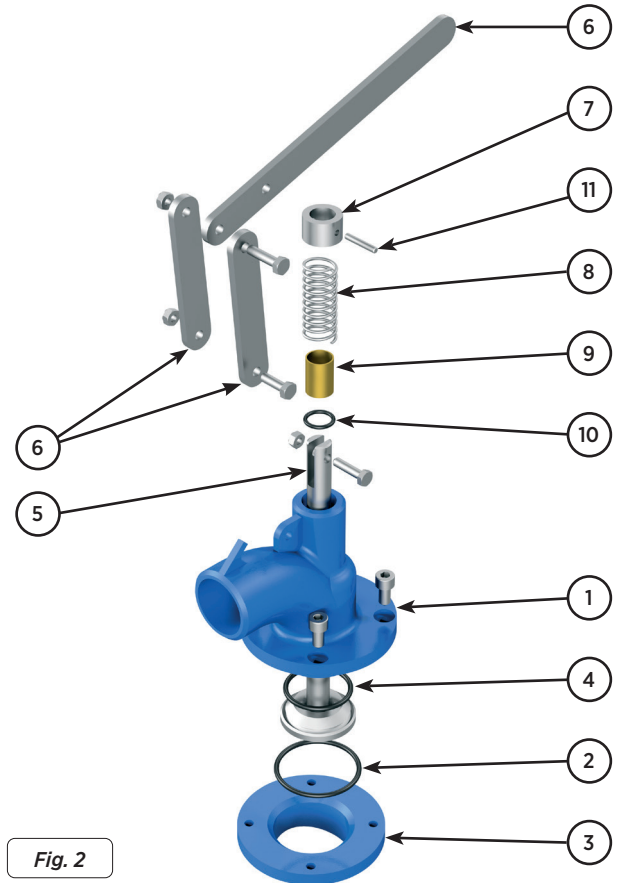


Fig. 2

DIMENSIONS

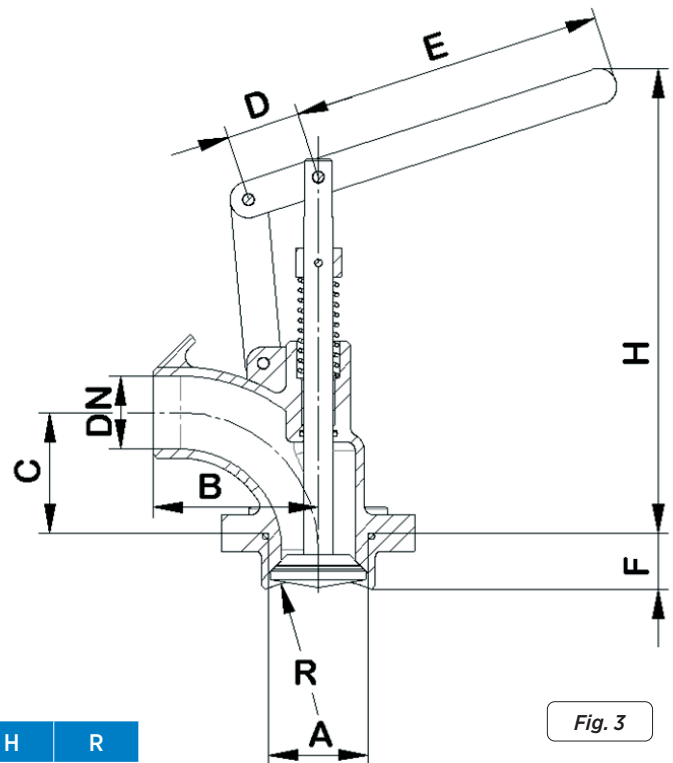


Fig. 3

Table 2

DN	A	B	C	D	E	F	H	R
25	39	90	66	40	170	31	255	75
40	54	90	66	40	170	31	255	75



www.cmovalves.com



CMOVALVES

QMS CERTIFIED BY LRQA
Approval number ISO9001 0035593

CMO VALVES
HEADQUARTERS MAIN
OFFICES & FACTORY

Amategi Aldea, 142
20400 Tolosa
Gipuzkoa (Spain)

Tel.: (+34) 943 67 33 99

cmo@cmovalves.com
www.cmovalves.com

CMO VALVES
MADRID

C/ Rumania, 5 - D5 (P.E. Inbisa)
28802 Alcalá de Henares
Madrid (Spain)

Tel.: (+34) 91 877 11 80

cmomadrid@cmovalves.com
www.cmovalves.com

CMO VALVES
FRANCE

5 chemin de la Brocardière
F-69570 DARDILLY
France

Tel.: (+33) 4 72 18 94 44

cmofrance@cmovalves.com
www.cmovalves.com